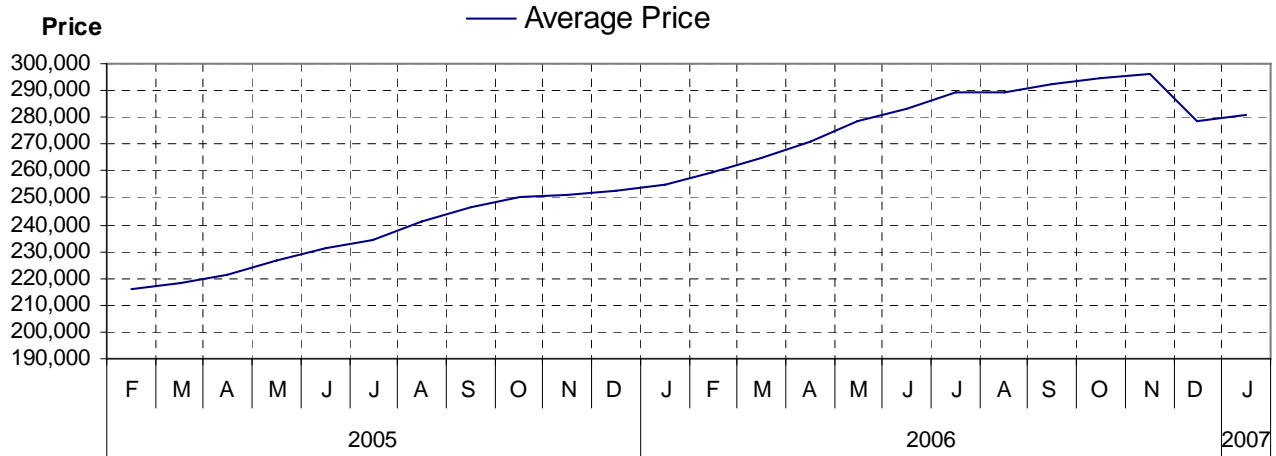


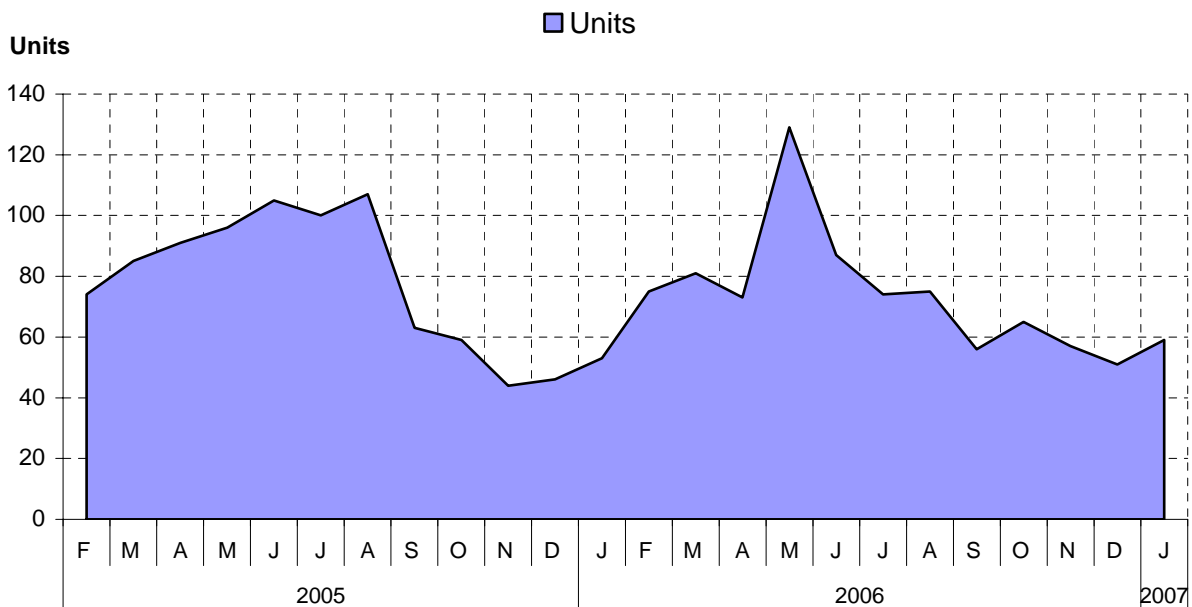
# Comox Valley as at January 31, 2007

## Cumulative Residential Average Single Family Sale Price



NOTE: Figures are based on a "rolling total" from the past 12 months – i.e. 12 months to date instead of the calendar "year to date".

## Single Family Units Reported Sold



## Comparative Activity by Property Type (Reported Sales – Unconditional Sales Only)

	-----CURRENT MONTH-----			-----12 MONTHS TO DATE-----		
	THIS YEAR	LAST YEAR	% Change	THIS YEAR	LAST YEAR	% Change
<b>LOTS</b>						
UNITS LISTED	23	23	0 %	293	171	71 %
UNITS REPORTED SOLD	5	17	70-%	95	107	11-%
SELL/LIST RATIO	21 %	73 %		32 %	62 %	
REPORTED SALES DOLLARS	829,000	2,129,300	61-%	14,656,398	13,679,990	7 %
AVG SELL PRICE/UNIT	165,800	125,252	32 %	154,277	127,850	20 %
MEDIAN SELL PRICE	138,000			145,000		
PRICE RATIO	99 %	99 %		97 %	99 %	
DAYS TO SELL	90	48	87 %	50	56	10-%
ACTIVE LISTINGS	183	43	325 %			
<b>SINGLE FAMILY</b>						
UNITS LISTED	115	114	0 %	1,359	1,272	6 %
UNITS REPORTED SOLD	59	60	1-%	971	1,036	6-%
SELL/LIST RATIO	51 %	52 %		71 %	81 %	
REPORTED SALES DOLLARS	17,218,118	15,381,890	11 %	272,833,032	247,028,380	10 %
AVG SELL PRICE/UNIT	291,832	256,364	13 %	280,981	238,444	17 %
MEDIAN SELL PRICE	291,500			277,000		
PRICE RATIO	98 %	98 %		98 %	98 %	
DAYS TO SELL	88	69	27 %	62	55	12 %
ACTIVE LISTINGS	322	253	27 %			
<b>CONDOMINIUM (APT)</b>						
UNITS LISTED	29	21	38 %	408	366	11 %
UNITS REPORTED SOLD	17	11	54 %	227	263	13-%
SELL/LIST RATIO	58 %	52 %		55 %	71 %	
REPORTED SALES DOLLARS	4,101,082	2,183,700	87 %	42,794,036	36,482,690	17 %
AVG SELL PRICE/UNIT	241,240	198,518	21 %	188,519	138,717	35 %
MEDIAN SELL PRICE	133,000			149,900		
PRICE RATIO	99 %	99 %		98 %	99 %	
DAYS TO SELL	74	129	42-%	63	56	12 %
ACTIVE LISTINGS	174	105	65 %			
<b>CONDOMINIUM (TWNHSE)</b>						
UNITS LISTED	16	16	0 %	176	148	18 %
UNITS REPORTED SOLD	2	7	71-%	116	100	16 %
SELL/LIST RATIO	12 %	43 %		65 %	67 %	
REPORTED SALES DOLLARS	336,500	1,323,600	74-%	20,558,900	15,135,806	35 %
AVG SELL PRICE/UNIT	168,250	189,085	11-%	177,231	151,358	17 %
MEDIAN SELL PRICE	193,000			169,400		
PRICE RATIO	95 %	97 %		98 %	98 %	
DAYS TO SELL	39	84	53-%	61	47	29 %
ACTIVE LISTINGS	49	44	11 %			

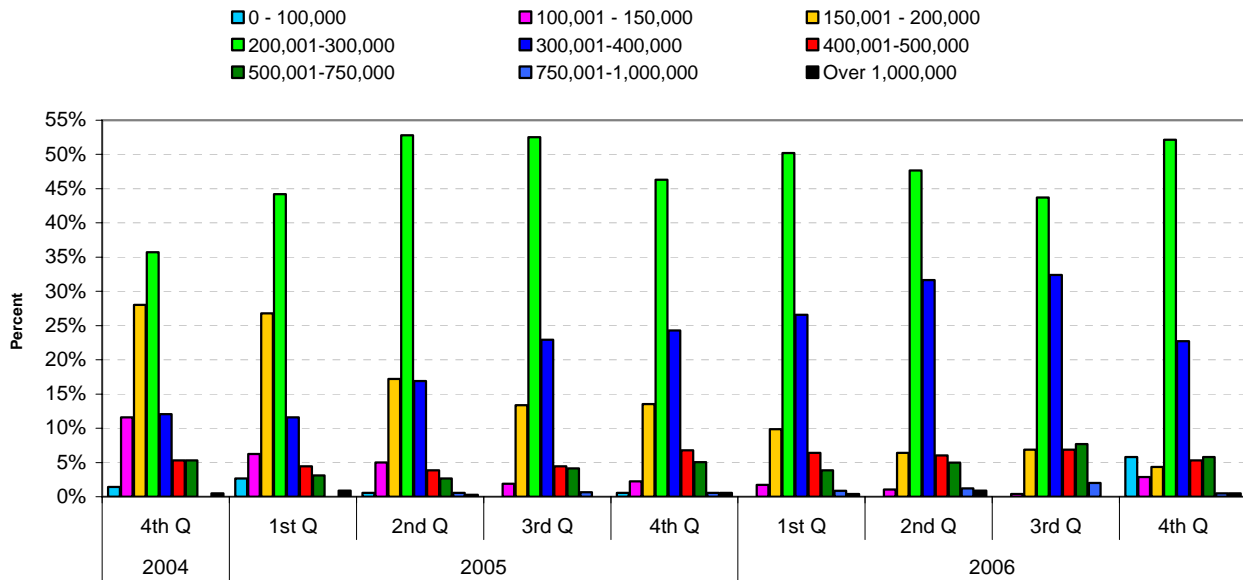
### PLEASE NOTE:

**SINGLE FAMILY** property does NOT INCLUDE acreage with house, condominiums, duplex/triplex, mobile homes, single family waterfront or single family strata.

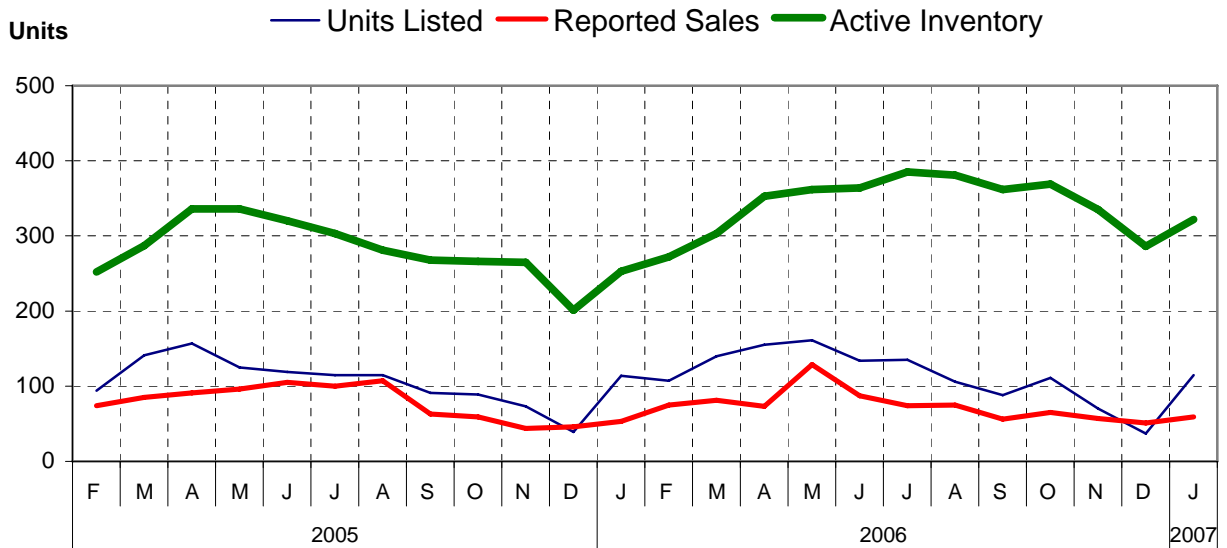
**LOTS** do NOT INCLUDE acreage or waterfront acreage.

**COLLAPSE RATE** – The collapse rate for all properties within the Board area was 0.3% for the current month.

### Percentage of Market Share by Price Range Comox Valley

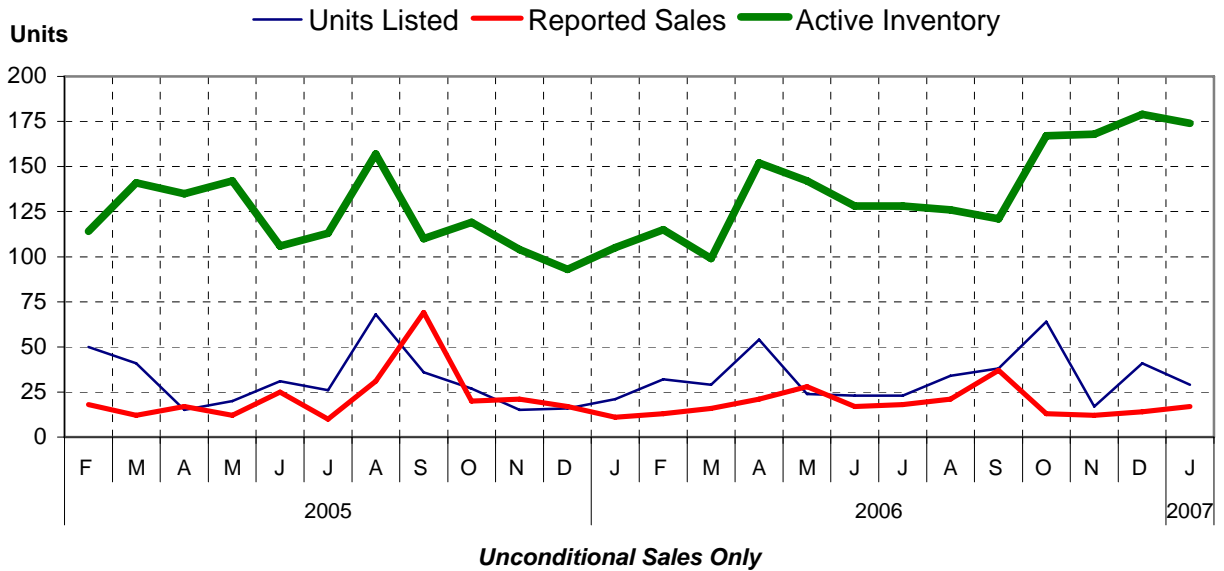


### Single Family Comparisons between

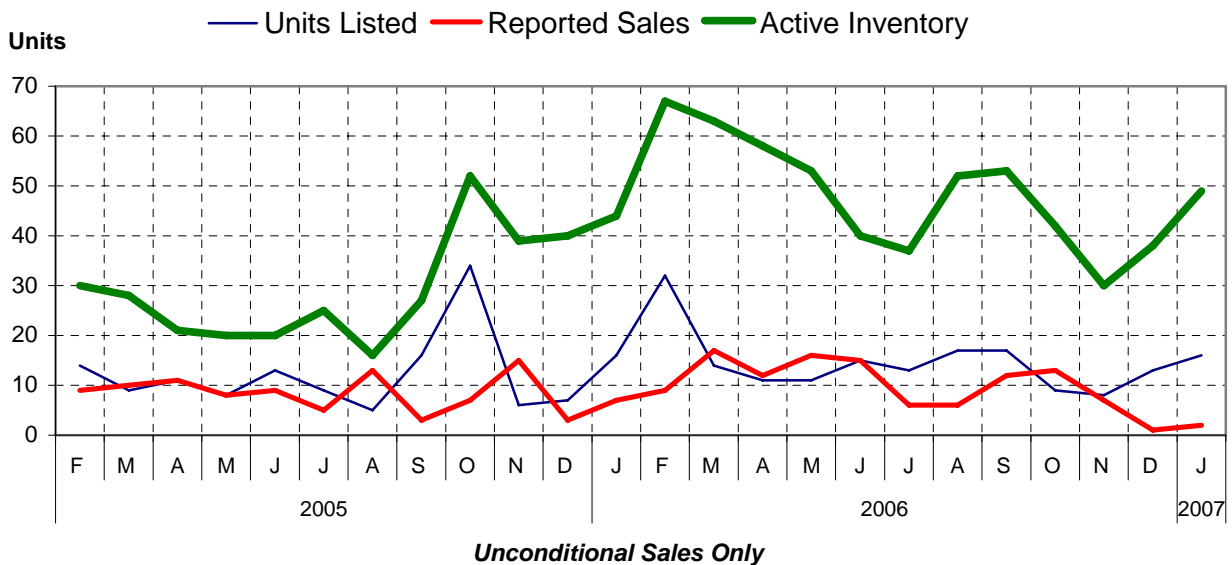


*\*Unconditional Sales Only*

## Condominium (Apartment) Comparisons between



## Condominium (Townhouse) Comparisons between



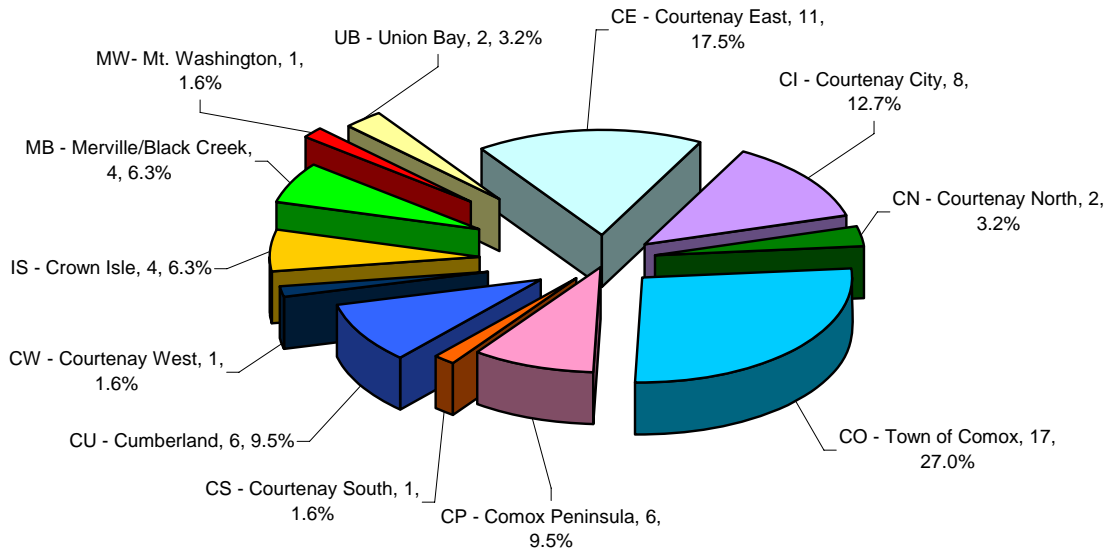
# MLS® Single Family Sales Analysis

## Unconditional Sales from January 1 to January 31, 2007

-----SUB-AREAS-----

RANGE	TOTAL	CE	CI	CN	CO	CP	CS	CU	CW	IS	MB	MW	UB
0 - 100,000	6	1	1		1	2		1					
100,001- 150,000	0												
150,001- 200,000	2		2										
200,001- 300,000	30	4	4	1	9	2	1	5			4		
300,001- 400,000	13	3	1		4				1	3			1
400,001- 500,000	8	2			2	1				1		1	1
500,001- 750,000	3	1		1	1								
750,001-1,000,000	1					1							
OVER 1,000,000	0												
<b>ZONE 2 TOTALS</b>	<b>63</b>	<b>11</b>	<b>8</b>	<b>2</b>	<b>17</b>	<b>6</b>	<b>1</b>	<b>6</b>	<b>1</b>	<b>4</b>	<b>4</b>	<b>1</b>	<b>2</b>

**Single Family Sales - Comox Valley  
by Subarea**



Total Unconditional Sales from January 1 to January 31, 2007 = 63